

ZOMM SERIES

ZOMM 141 / (XXX) / 4 / 1

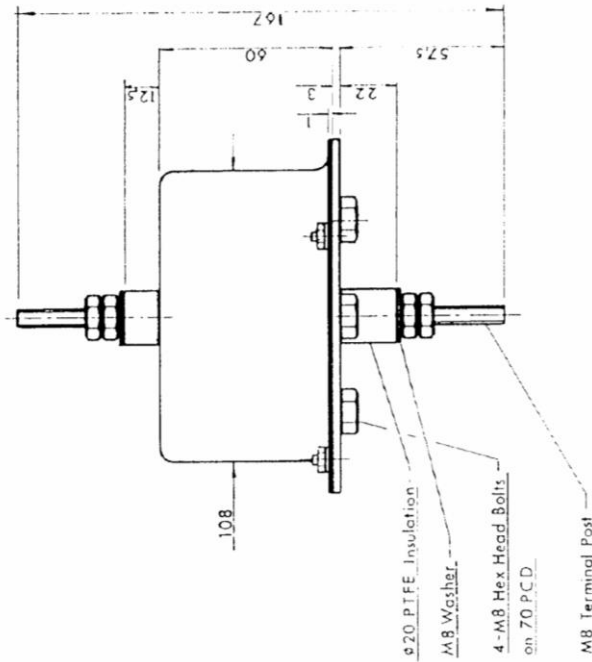
| (XXX) | 06 | 07 | 08 | 09 | 1 | 2 | 3 | 4 | 5 | 6 | 7 | 8 |
|---|-----|-----|-----|-----|-----|-----|-----|-----|-----|-----|-----|------|
| Continuous Operating Voltage : a.c. (rms) | 50 | 60 | 95 | 110 | 120 | 135 | 150 | 180 | 220 | 250 | 280 | 320 |
| Energy per channel (Joules) (10/1000µs) | 125 | 150 | 250 | 325 | 380 | 400 | 500 | 520 | 640 | 700 | 800 | 920 |
| Max. Peak Clamping Volts at 100A (8/20µs) | 170 | 200 | 300 | 335 | 365 | 410 | 450 | 540 | 670 | 760 | 850 | 1000 |

| (XXX) | 9 | 10 | 11 | 11 |
|---|------|------|------|------|
| Continuous Operating Voltage : a.c. (rms) | 380 | 415 | 440 | 600 |
| Energy per channel (Joules) (10/1000µs) | 1040 | 1160 | 1280 | 1500 |
| Max. Peak Clamping Volts at 100A (8/20µs) | 1200 | 1300 | 1400 | 1900 |

Characteristics:

| | |
|--|---|
| No. of channels | 1 |
| 50 Shot (4/20µs) Repetitive Duty | 5000A |
| Response Time | <10ns |
| Continuous Current per Channel | 60A (Can be supplied as a special with 100A Copper conductors add Cu to part No.) |
| Max. (8/20µs) Current per Channel | 30000A |
| Leakage Current per Channel at Rated Voltage, d.c. | <200µA |
| Through Inductance | <10µH |
| Volts Drop | Negligible |
| Terminations | 8mm Brass |
| Bushes | PTFE |
| Earth Connection | To Base Plate |
| Recommended Torque per M8 Terminal | 6.0Nm Brass, 5.6Nm Copper conductors (Ensure terminal does not rotate) |

ZOMM 141 / (XXX) / 4 / 1



Contacts

PD Devices Ltd
Old Station Yard,
South Brent,
Devon,
TQ10 9AL, UK.

Telephone : +44 01364 649248
Facsimile : +44 01364 649250
E-mail Enquiries : enquiries@pddevices.co.uk
Web Site : www.pddevices.co.uk

enquiries@pddevices.co.uk

www.pddevices.co.uk

+44 (0)1364 649248