

## ZOMM SERIES

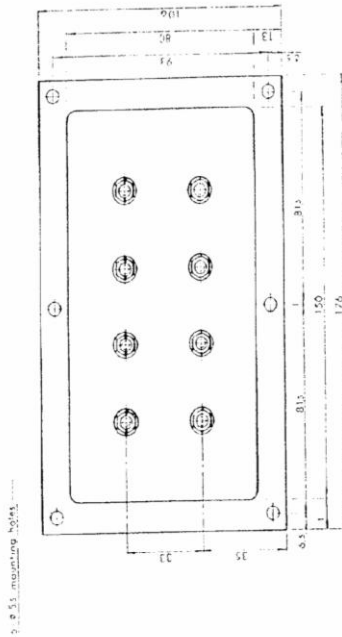
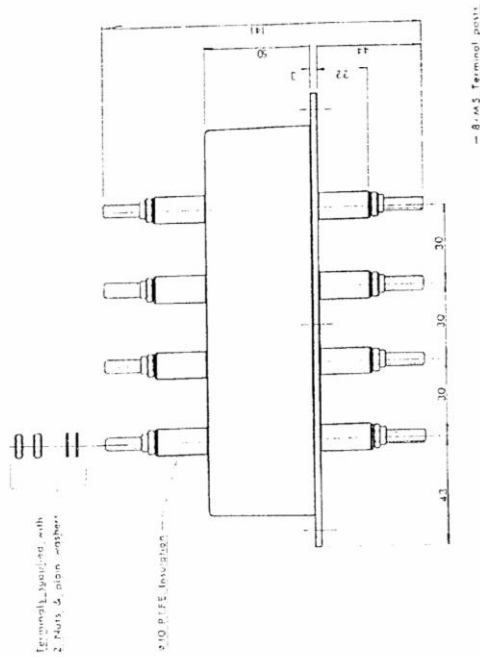
### ZOMM 205 / (XXX) / 2 / 8

(XXX)	400	401	502	503	504	505	508	509	510
Continuous Operating Voltage : a.c. (rms)	50	60	95	110	120	135	220	250	280
Energy per channel (Joules) (10/1000µs)	55	65	95	100	110	130	210	240	250
Max. Peak Clamping Volts at 100A (8/20µs)	170	200	250	310	340	390	650	700	820

#### Characteristics:

No. of channels	8
50 Shot (4/20µs) Repetitive Duty	2000A
Response Time	<10ns
Continuous Current per Channel	25A
Max. (8/20µs) Current per Channel	10000A
Leakage Current per Channel at Rated Voltage, d.c.	<200µA
Through Inductance	<10µH
Volts Drop	Negligible
Terminations	5mm Brass
Bushes	PTFE
Earth Connection	To Base Plate
Recommended Torque per M8 Terminal	3.0Nm (Ensure terminal does not rotate)

# ZOMM 205 / (XXX) / 2 / 8



## Contacts

**PD Devices Ltd  
Old Station Yard,  
South Brent,  
Devon,  
TQ10 9AL, UK.**

**Telephone : +44 01364 649248  
Facsimile : +44 01364 649250  
E-mail Enquiries : [enquiries@pddevices.co.uk](mailto:enquiries@pddevices.co.uk)  
Web Site : [www.pddevices.co.uk](http://www.pddevices.co.uk)**

[enquiries@pddevices.co.uk](mailto:enquiries@pddevices.co.uk)

[www.pddevices.co.uk](http://www.pddevices.co.uk)

+44 (0)1364 649248