

## ZOMM SERIES

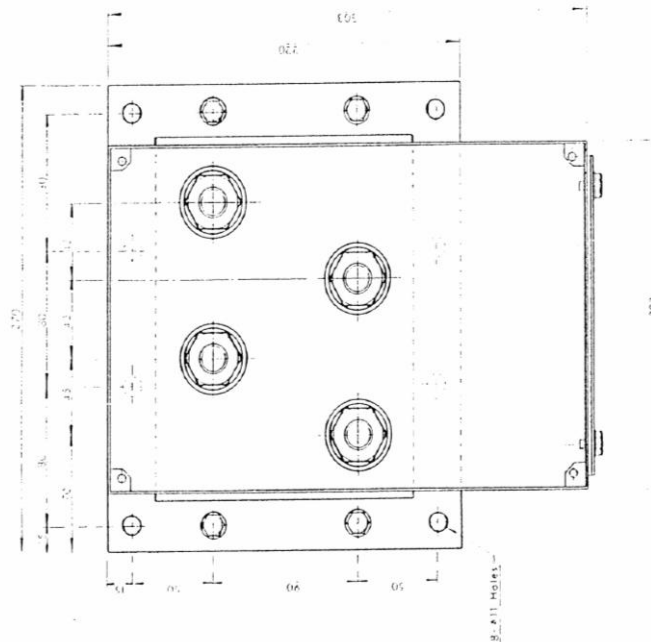
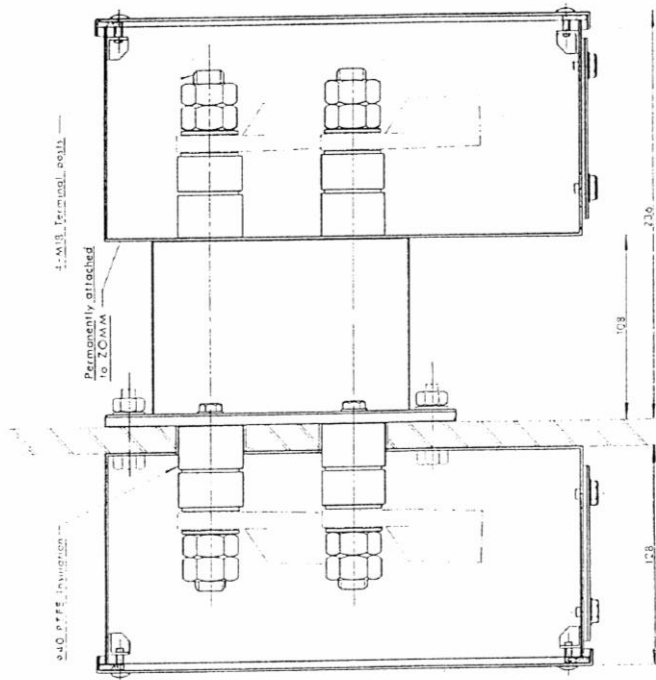
### ZOMM 223 / (XXX) / 4 / 4

(XXX)	1	2	3	4	5	6	7	8	9	10	11
<b>Continuous Operating Voltage : a.c. (rms)</b>	120	135	150	180	220	250	280	320	380	415	440
<b>Energy per channel (Joules) (10/1000µs)</b>	460	480	500	520	640	760	900	960	1040	1160	1280
<b>Max. Peak Clamping Volts at 100A (8/20µs)</b>	340	380	420	510	630	690	800	990	1060	1150	1210

#### Characteristics:

<b>No. of channels</b>	4 (2 channel version available)
<b>50 Shot (4/20µs) Repetitive Duty</b>	5000A
<b>Response Time</b>	<10ns
<b>Continuous Current per Channel</b>	600A
<b>Max. (8/20µs) Current per Channel</b>	30000A
<b>Leakage Current per Channel at Rated Voltage, d.c.</b>	<200µA
<b>Through Inductance</b>	<10µH
<b>Volts Drop</b>	Negligible
<b>Terminations</b>	18mm Copper
<b>Bushes</b>	PTFE
<b>Earth Connection</b>	To Base Plate
<b>Recommended Torque per M8 Terminal</b>	40Nm (Ensure terminal does not rotate)

# ZOMM 223 / (XXX) / 4 / 4



## Contacts

**PD Devices Ltd**  
**Old Station Yard,**  
**South Brent,**  
**Devon,**  
**TQ10 9AL, UK.**

**Telephone : +44 01364 649248**  
**Facsimile : +44 01364 649250**  
**E-mail Enquiries : [enquiries@pddevices.co.uk](mailto:enquiries@pddevices.co.uk)**  
**Web Site : [www.pddevices.co.uk](http://www.pddevices.co.uk)**

[enquiries@pddevices.co.uk](mailto:enquiries@pddevices.co.uk)

[www.pddevices.co.uk](http://www.pddevices.co.uk)

+44 (0)1364 649248